

# Have you seen this invasive plant?

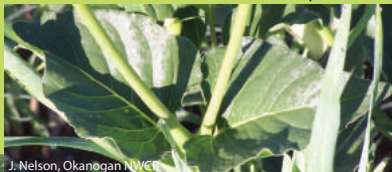
**Wild four o'clock** can quickly spread from small infestations to cover acres of fields and rangelands in Eastern Washington.

***Learn more at [www.nwcb.wa.gov](http://www.nwcb.wa.gov)***

Wild four o'clock is a branching, perennial plant that grows 3-4 feet tall.



Leaves are opposite on the stem and heart- to somewhat oval-shaped.



Theodore Webster, USDA Agricultural Research Service, Bugwood.org

Pinkish purple flowers are 3/8 inch wide and occur in clusters of 3-5. Its name refers to the flowers, which open late in the day and wither early the next morning.



Bracts at flower base cover seeds.

## Why is wild four o'clock (*Mirabilis nyctaginea*) a noxious weed?

- This non-native, invasive plant rapidly forms infestations on rangelands and cultivated fields.
- It readily spreads by seed and can re-sprout from root fragments.

## Where do you find wild four o'clock?

- It is found in a range of habitats in Eastern Washington including orchards, alfalfa fields, rangelands, fence rows, dry meadows, railroad embankments and in industrial/residential vacant lots.
- It grows in sandy, rocky soils to heavy cultivated soils.

## What can you do?

- Learn to identify this Class A noxious weed.
- Please note that eradication of this invasive plant is required in Washington State to prevent it from gaining a foothold.
- Report any sightings to your county noxious weed control board or to [noxiousweeds@agr.wa.gov](mailto:noxiousweeds@agr.wa.gov).

